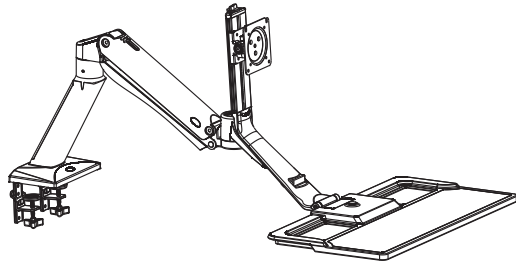




# Ergonomics Desktop Display Mount Installation Instructions



## NB40

Fits Most Monitors Size : 22"~32"

Load Capacity : 4.4~33lbs (2~15kg)

VESA:75×75,100×100mm

Severe personal injury and property damage can result from improper installation or assembly. Read the following warning carefully before beginning.

- Products must be installed by professional or installer.
- If you do not understand the instructions or have any concerns or questions, please contact a qualified local installer.
- Do not install or assemble if the product or hardware is damaged or missing, if you require replacement parts, please contact your local distributor for assistance.
- This product fits most 22"-32" LCD / monitor; maximum weight of LCD / monitor: 15kg / 33lbs.
- Installer-friendly and straight forward.
- For safe installation, the desk you are mounting to must support minimum 3 times the weight of the total load (the mount, the monitor and all accessories weight).
- Do not use this product for other than the original designed.
- This product contain moving parts, please use with caution.
- When installing monitor, please do not damage electrical wiring or power source.
- Installation and routing of monitor cables on the monitor bracket must comply with electro-technical regulations.
- Importantly, mains- and data-cables must be secured against twisting and squeezing or shearing.
- The manufacturer will bear no responsibility to the desk of mounting, or incidental or consequential damages arising thereof.
- The manufacturer disclaims any liability for the modifications, improper installation, or installation over the specified weight range. The manufacturer will not be liable for any damages arising out of the use of , or inability to use, the product.
- This product is designed for indoor used only, use of this product outdoor could lead to product failer and severe personal injury.
- ▲ This product contains a high pressure gas spring, fire and percussion prohibited. Also it is strictly prohibited to dismantle without professionals. Please return to the manufacturer or hand over to professional agencies if the product is abandoned. In order to ensure the performance of gas spring, full direction adjustment of the product arm is recommended several times per month.

We reserve the right to modify or alter instructions. No modification or alteration without formal notice.

## Symbols

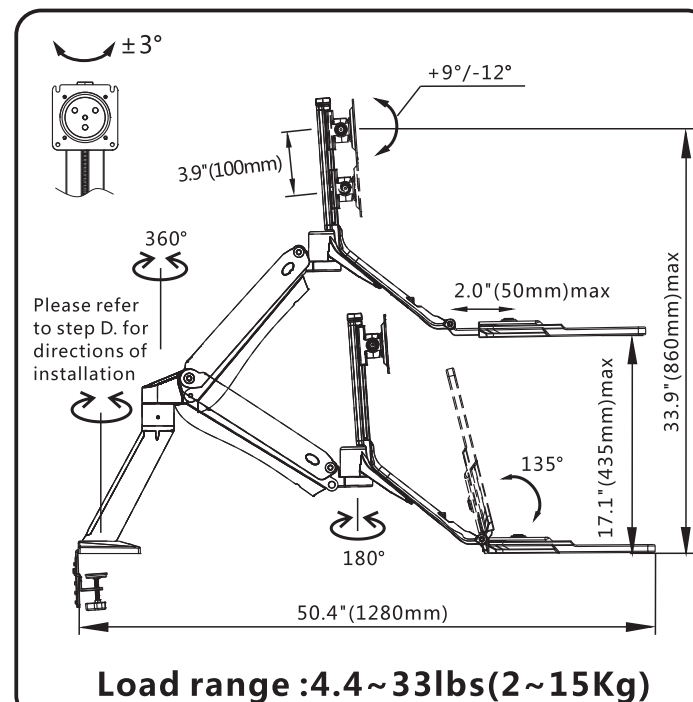
	Tightening Direction loosening Direction		+ : Torque increased - : Torque reduced
	Tightening Direction loosening Direction		+ : Torque increased - : Torque reduced
	Phillips Screwdriver		By Hand
	Open-End Wrench		Hex Wrench
	Adjustment		Pencil
OPT	Optional	NOTE	Reminder
	Warning		Hand Drill
	Remove		Star Wrench

## NB40 Installation Manual Table Edge Installation or Grommet Installation

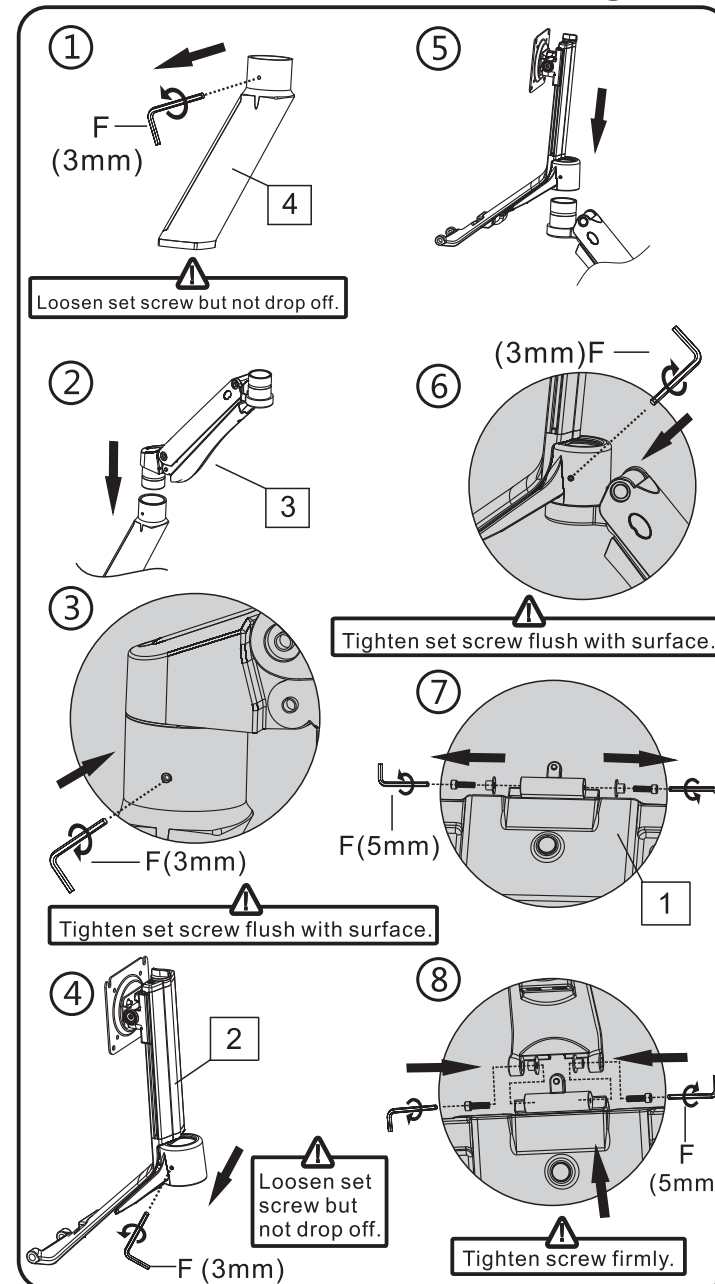
### Part list

1	4
2	5
3	6
7	8
A	B
4x M4*12	4x M5*12
C	
4x M6*25	
D	E
1x Locking plate	1x Butterfly nut
F	
1x Base plate	1x Carriage Bolt

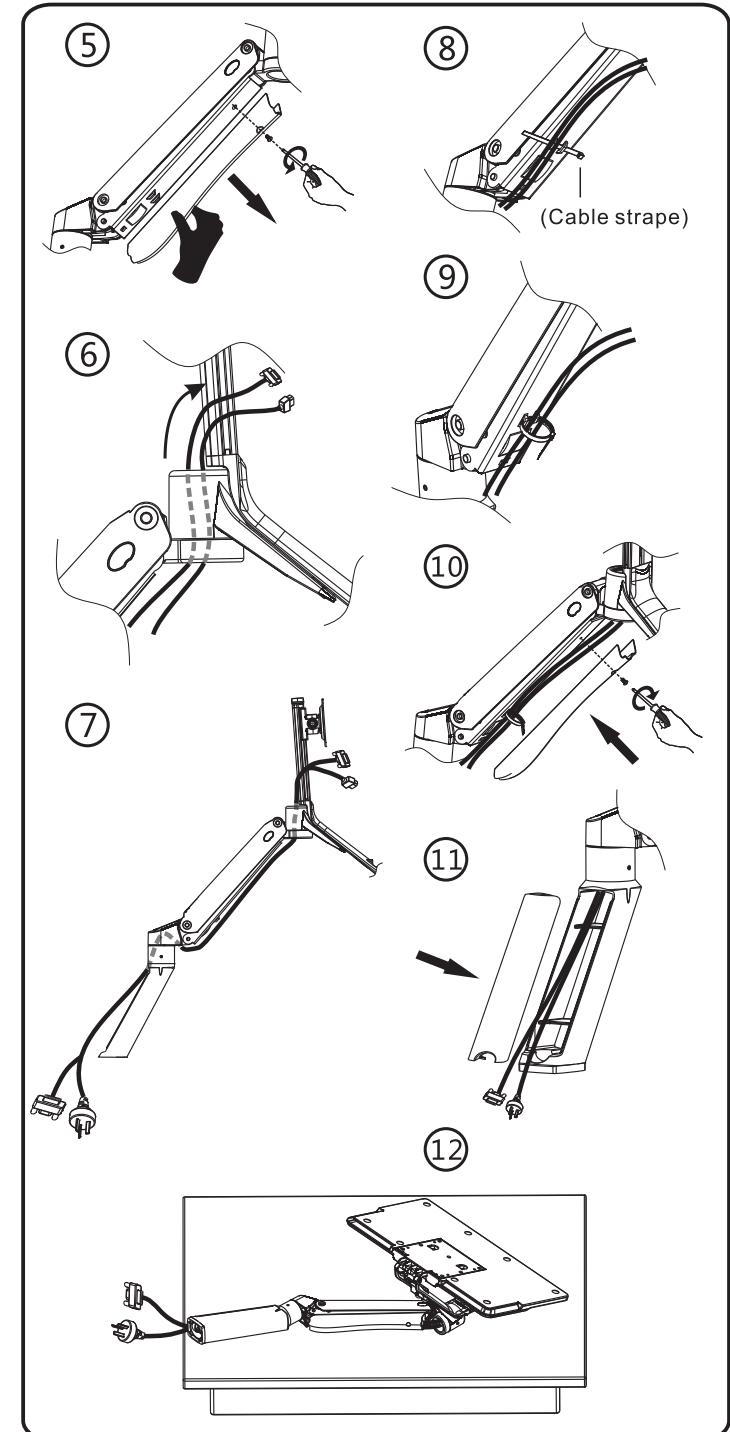
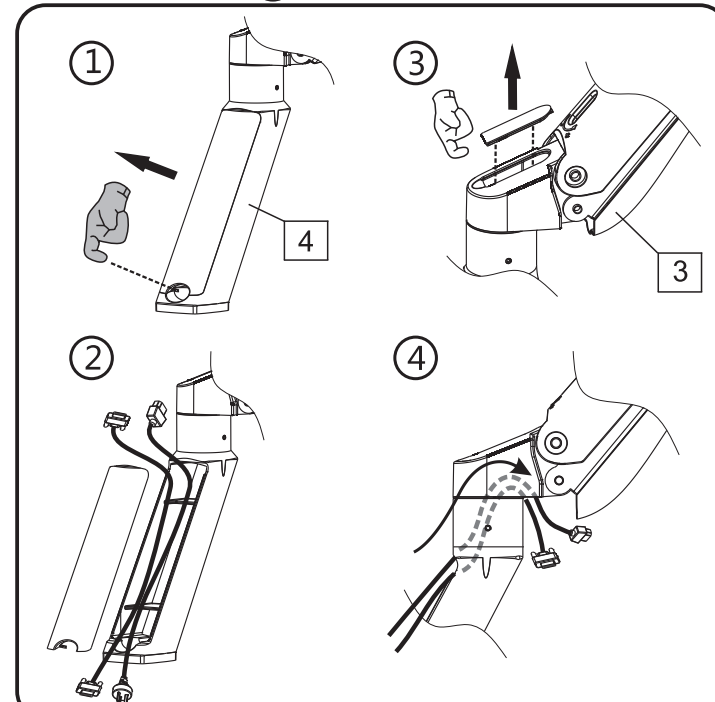
### A. Adjustable parameters after full installation :



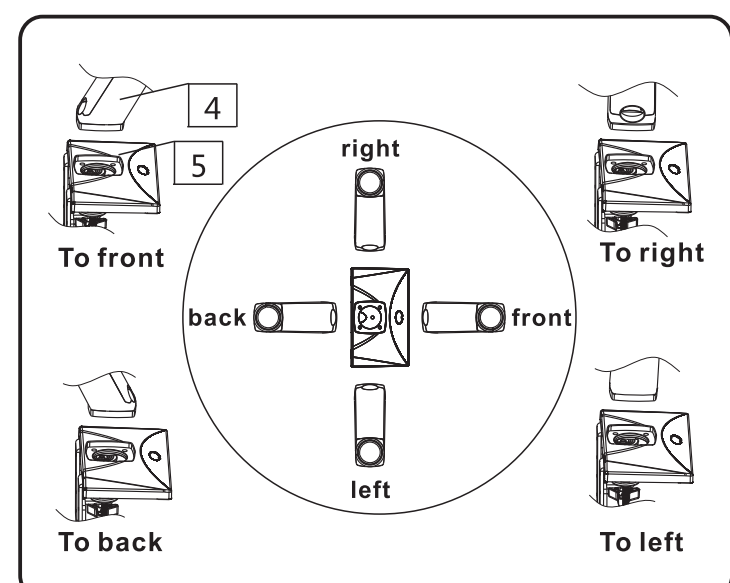
### B. Display mount installation : (Need 2 men)



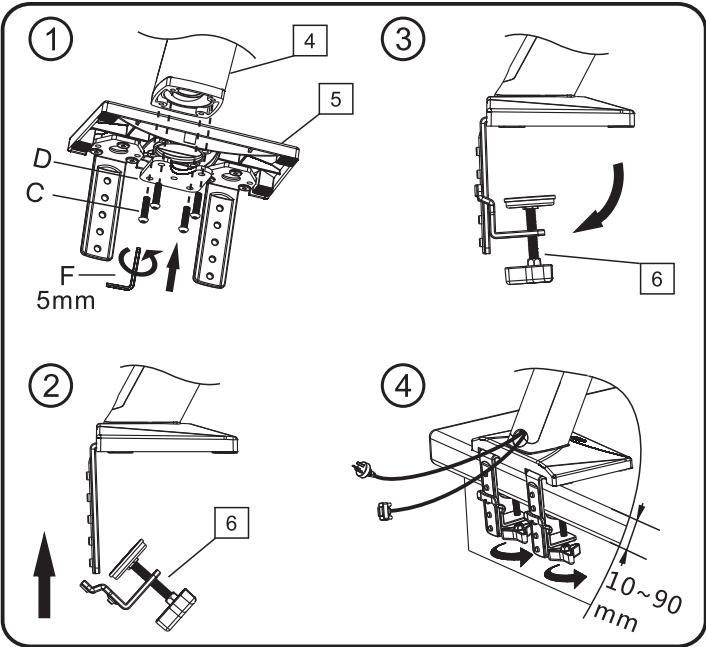
### C. Power cables and display lines installation: (Need 2 men)



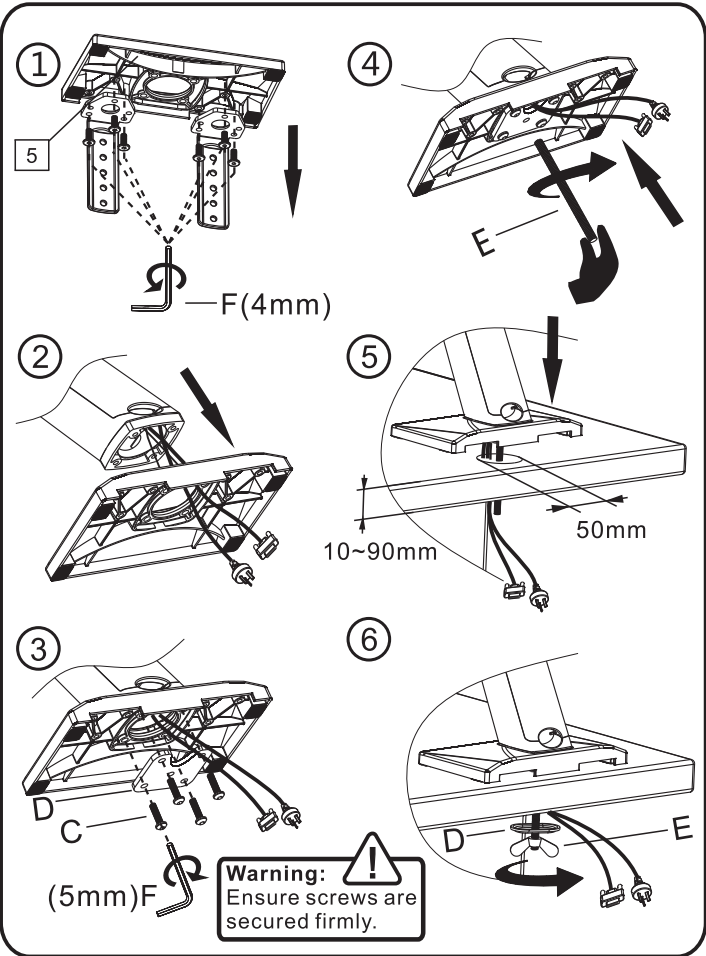
### D. Lower arm to base installation (four directions)



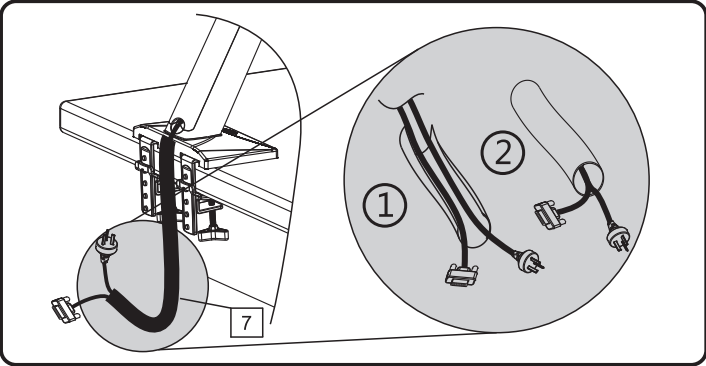
E1、Table edge installation:



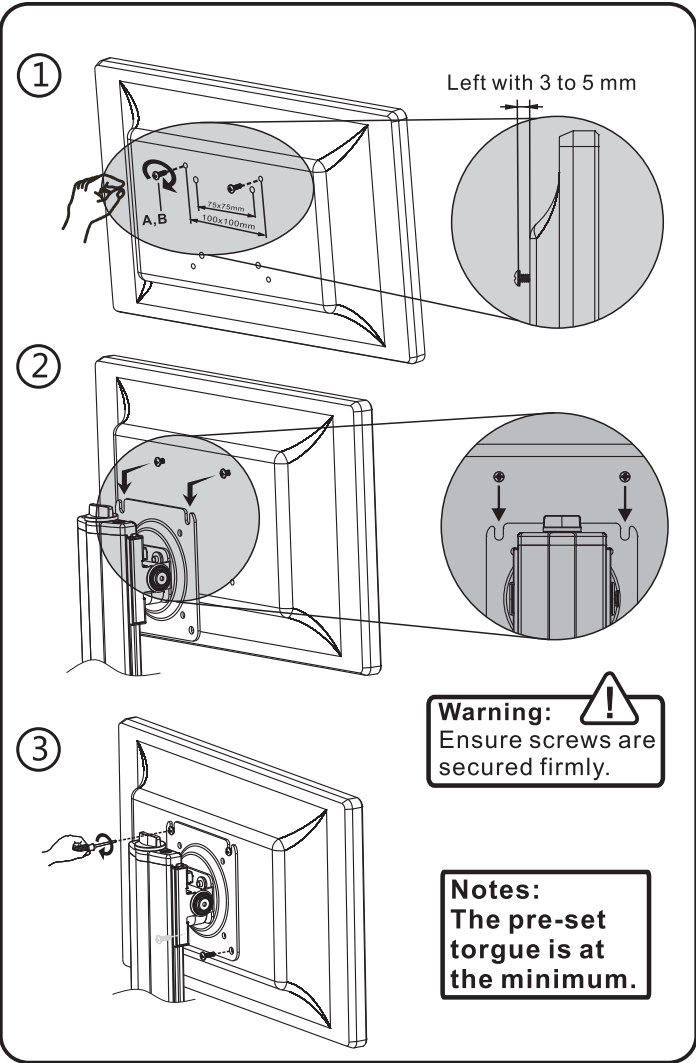
E2、Grommet installation :



F、Cables management with cable sleeve :

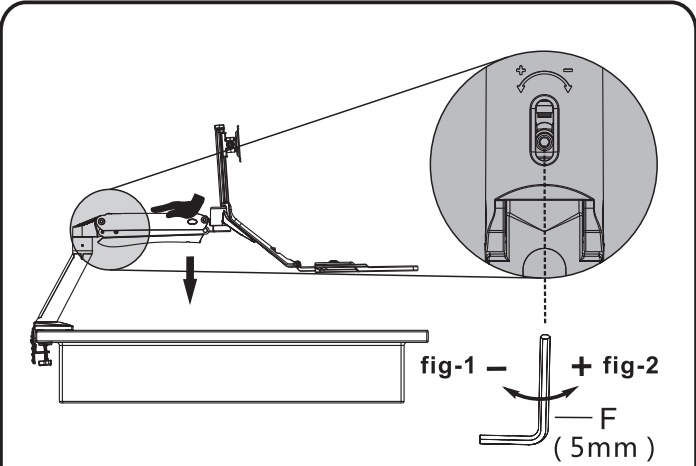


G、Display installation



H、Torque adjustment

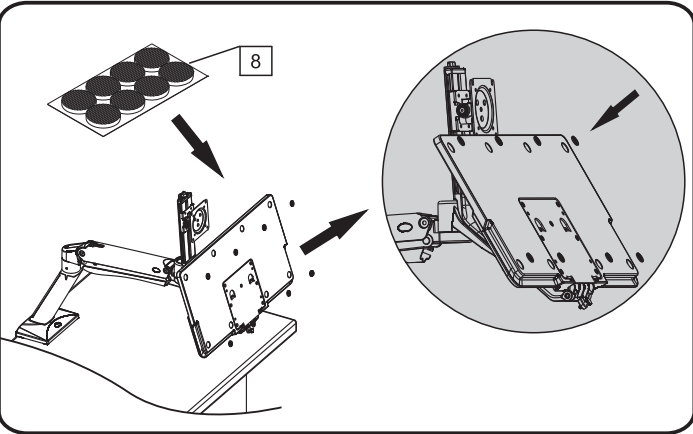
" - " : Torque decrease direction shown fig-1  
" + " : Torque increase direction shown fig-2



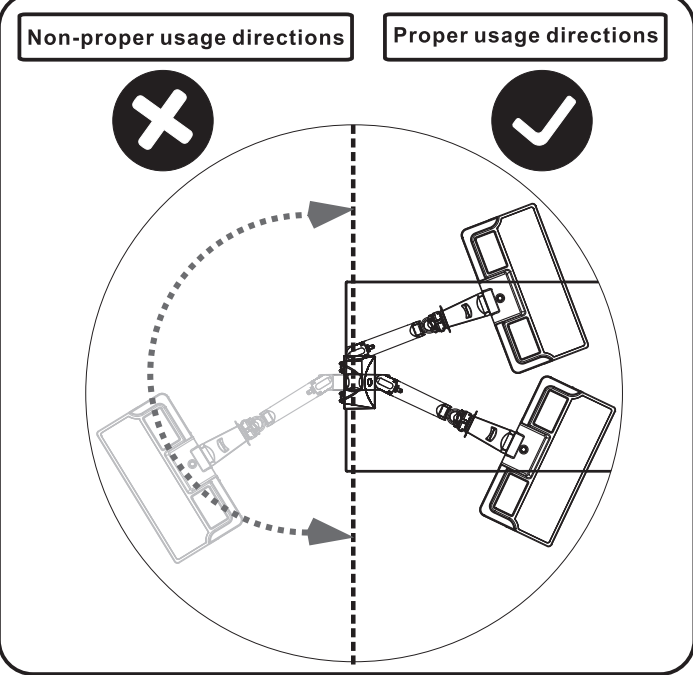
Notes : Ensure display weight is within load range

- 1.If display can be hovered at any height after display installed. No adjustment needed.
2. If display lift up automatically after display installed,adjust as follow: Wind the set screw to ' - ' direction to reduce torque by using F, 5mm Alley key as shown in fig-1.Until display can be hovered at any point of positions.
- 3.If display sit at lowest position, adjust as follow wind set screw to ' + ' direction to increase torque as fig-2 until Display can be hovered at any point of positions.

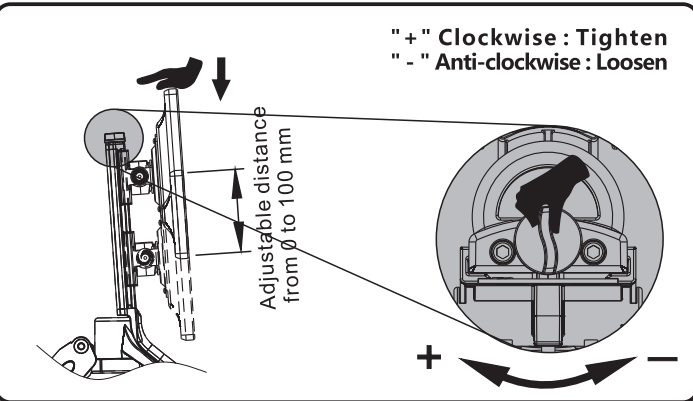
I、Keyboard pads fixing



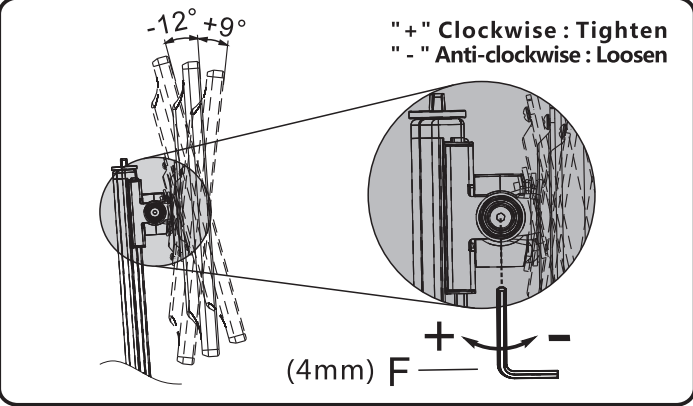
J、Rotation restriction



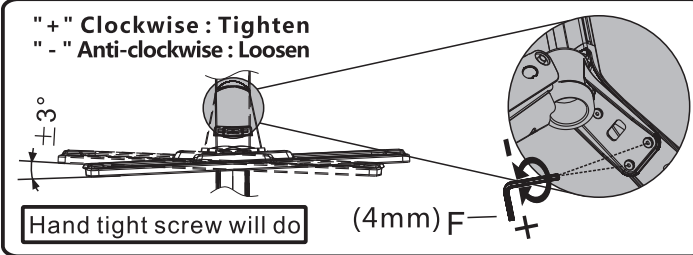
K、Display height adjustment



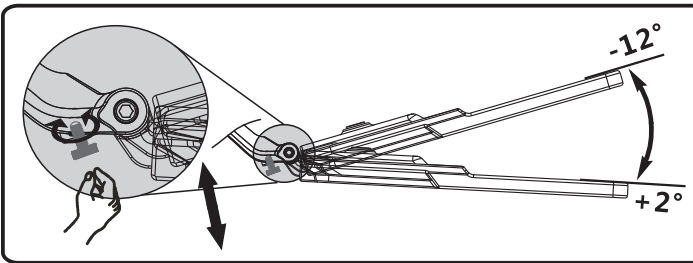
L、Tilt angle adjustment



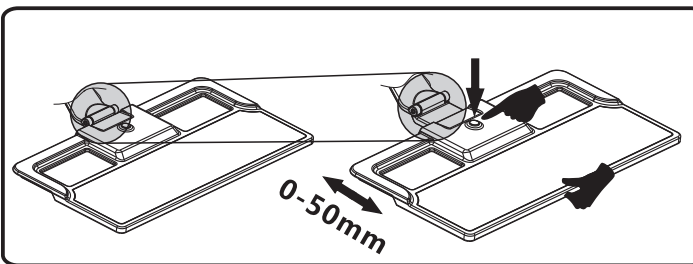
M、Keyboard tray level minor adjustment



N、Keyboard tray angles adjustment



O、Keyboard tray extension adjustment



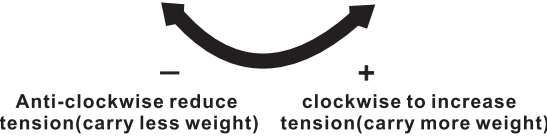
TENSION ADJUSTMENT  
AFTER MOUNT INSTALLED



Do not adjust tention without putting on display.

- 1.Ensure display has been put onto mount.
- 2.Read your display packaging or manual to find out display net weight.
- 3.Ensure display net weight between 4.4-33lbs(2-15kg)

Adjustment sign



Warning!



Kunshan Hongjie Electronics Co., Ltd.  
1050, Fu Chun Jiang Road, Economic Development Zone.  
Kunshan City, Jiangsu Province, China. 215000  
Mail :info@nbavmount.com www.new-nb.com